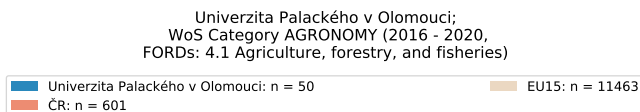
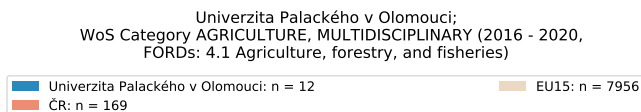
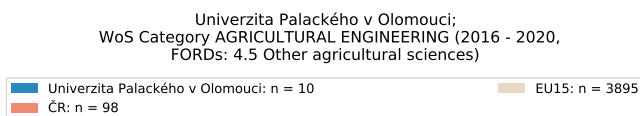
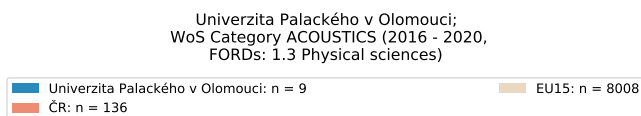


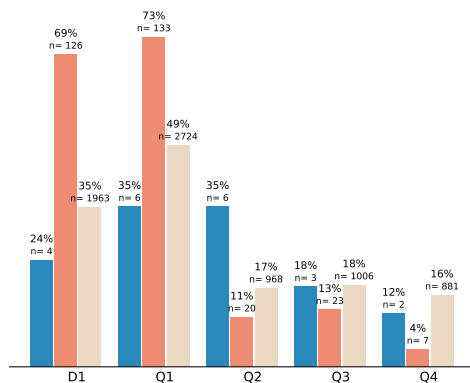
Nejvýznamnější WoS Categories (roky 2016 - 2020)

3) Nejvýznamnější WoS categories



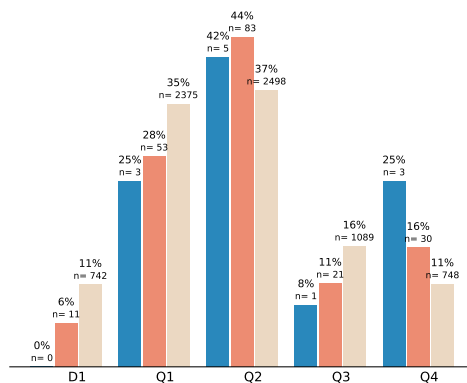
Univerzita Palackého v Olomouci;
WoS Category ALLERGY (2016 - 2020,
FORDs: 3.2 Clinical medicine)

Univerzita Palackého v Olomouci: n = 17
ČR: n = 183
EU15: n = 5579



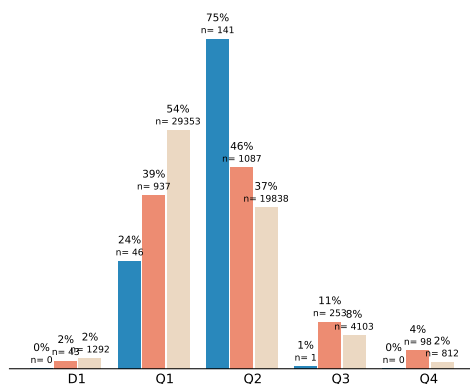
Univerzita Palackého v Olomouci;
WoS Category ANTHROPOLOGY (2016 - 2020,
FORDs: 5.4 Sociology)

Univerzita Palackého v Olomouci: n = 12
ČR: n = 187
EU15: n = 6710



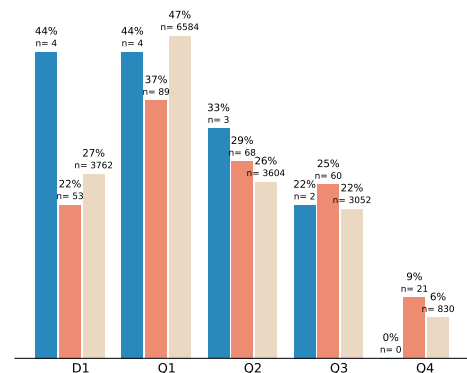
Univerzita Palackého v Olomouci;
WoS Category ASTRONOMY & ASTROPHYSICS (2016 - 2020,
FORDs: 1.3 Physical sciences)

Univerzita Palackého v Olomouci: n = 188
ČR: n = 2375
EU15: n = 54106



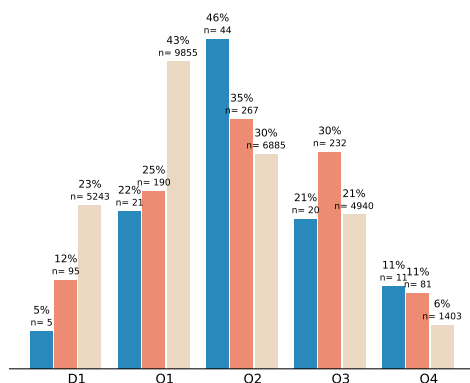
Univerzita Palackého v Olomouci;
WoS Category AUTOMATION & CONTROL SYSTEMS (2016 - 2020,
FORDs: 2.2 Electrical engineering, electronic engineering, information engineering)

Univerzita Palackého v Olomouci: n = 9
ČR: n = 238
EU15: n = 14070



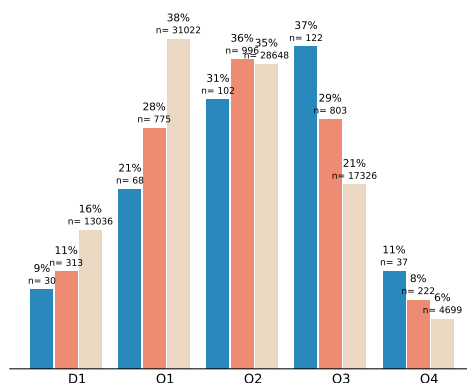
Univerzita Palackého v Olomouci;
WoS Category BIOCHEMICAL RESEARCH METHODS (2016 - 2020,
FORDs: 1.6 Biological sciences)

Univerzita Palackého v Olomouci: n = 96
ČR: n = 770
EU15: n = 23083



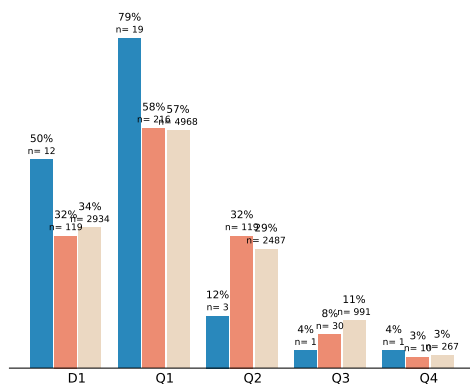
Univerzita Palackého v Olomouci;
WoS Category BIOCHEMISTRY & MOLECULAR BIOLOGY (2016 - 2020,
FORDs: 1.6 Biological sciences)

Univerzita Palackého v Olomouci: n = 329
ČR: n = 2796
EU15: n = 81695



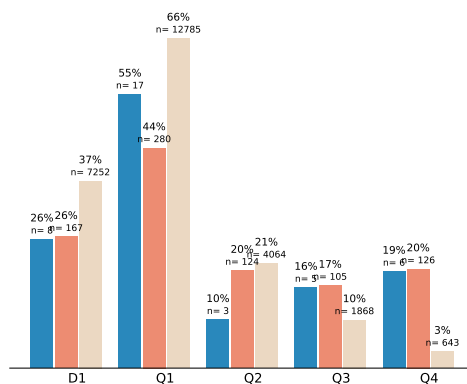
Univerzita Palackého v Olomouci;
WoS Category BIODIVERSITY CONSERVATION (2016 - 2020,
FORDs: 1.6 Biological sciences)

Univerzita Palackého v Olomouci: n = 24
ČR: n = 375
EU15: n = 8713

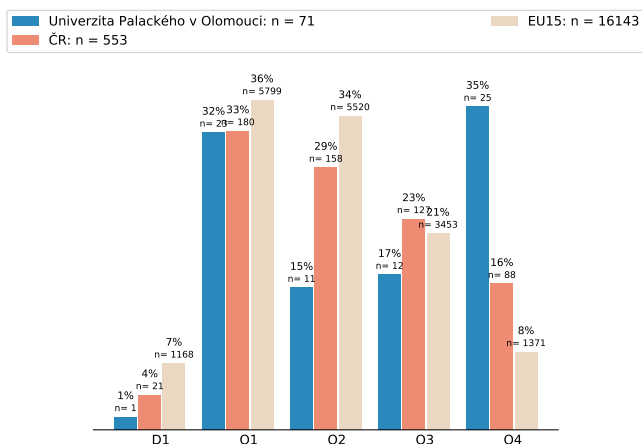


Univerzita Palackého v Olomouci;
WoS Category BIOLOGY (2016 - 2020,
FORDs: 1.6 Biological sciences)

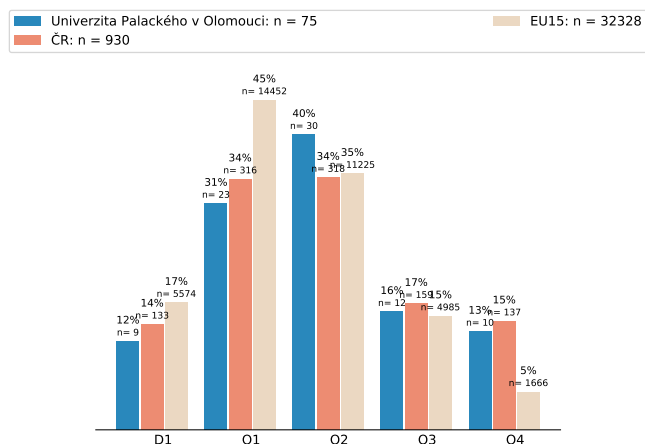
Univerzita Palackého v Olomouci: n = 31
ČR: n = 635
EU15: n = 19360



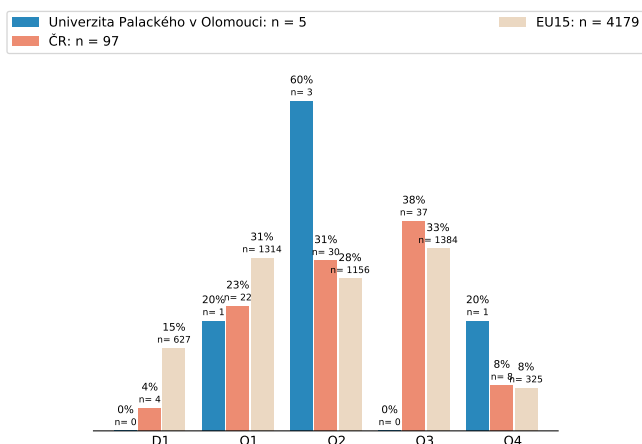
Univerzita Palackého v Olomouci;
WoS Category BIOPHYSICS (2016 - 2020,
FORDs: 1.6 Biological sciences)



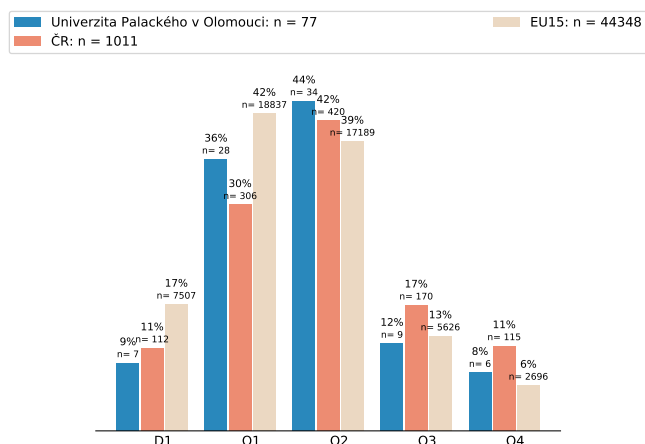
Univerzita Palackého v Olomouci;
WoS Category BIOTECHNOLOGY & APPLIED MICROBIOLOGY (2016 - 2020,
FORDs: 2.8 Environmental biotechnology)



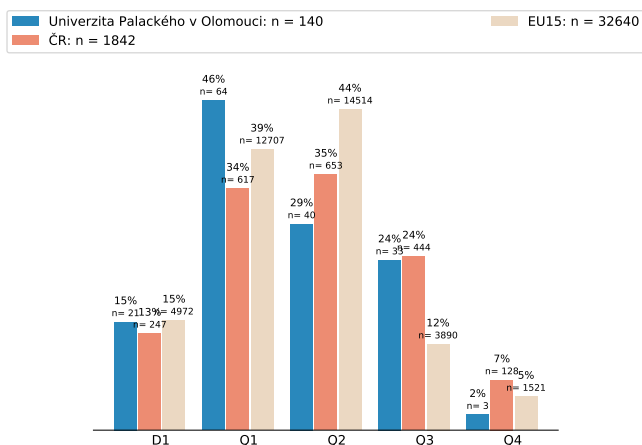
Univerzita Palackého v Olomouci;
WoS Category CELL & TISSUE ENGINEERING (2016 - 2020,
FORDs: 2.6 Medical engineering)



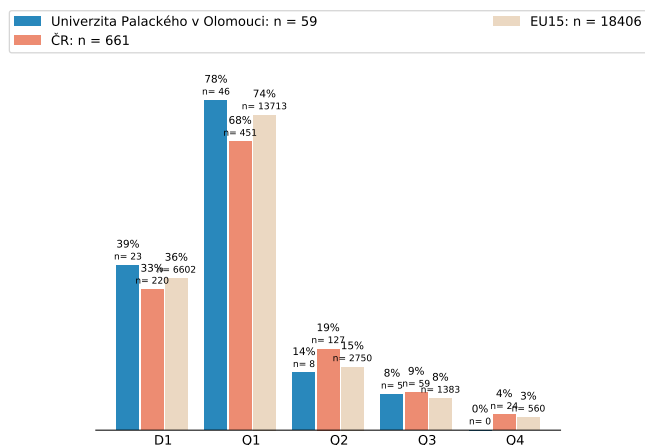
Univerzita Palackého v Olomouci;
WoS Category CELL BIOLOGY (2016 - 2020,
FORDs: 1.6 Biological sciences)



Univerzita Palackého v Olomouci;
WoS Category CHEMISTRY, ANALYTICAL (2016 - 2020,
FORDs: 1.4 Chemical sciences)

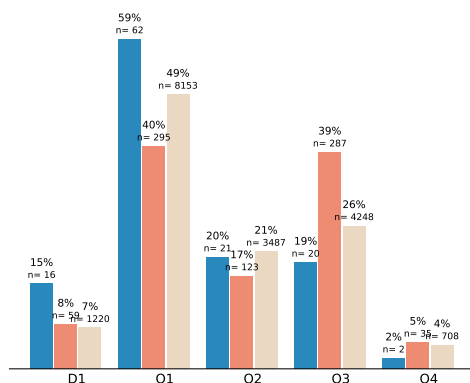


Univerzita Palackého v Olomouci;
WoS Category CHEMISTRY, APPLIED (2016 - 2020,
FORDs: 1.4 Chemical sciences)



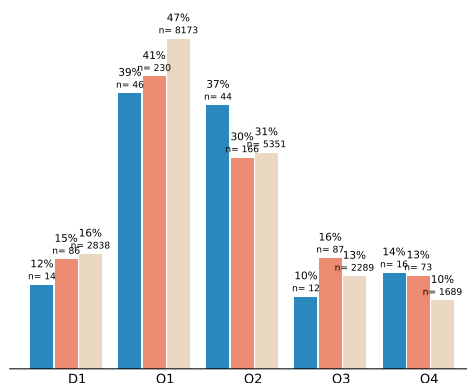
Univerzita Palackého v Olomouci;
WoS Category CHEMISTRY, INORGANIC & NUCLEAR (2016 - 2020,
FORDs: 1.4 Chemical sciences)

Univerzita Palackého v Olomouci: n = 105
ČR: n = 740
EU15: n = 16596



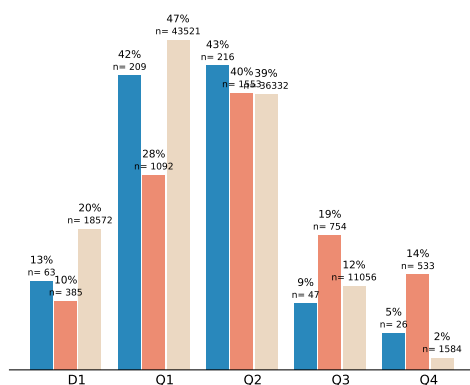
Univerzita Palackého v Olomouci;
WoS Category CHEMISTRY, MEDICINAL (2016 - 2020,
FORDs: 3.1 Basic medical research)

Univerzita Palackého v Olomouci: n = 118
ČR: n = 556
EU15: n = 17502



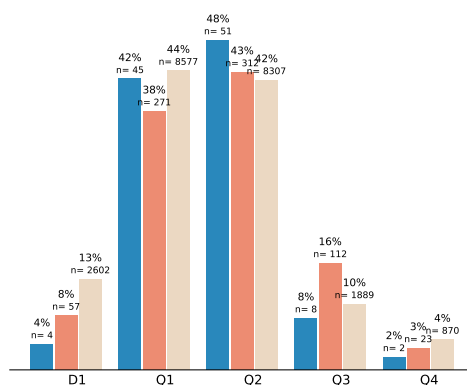
Univerzita Palackého v Olomouci;
WoS Category CHEMISTRY, MULTIDISCIPLINARY (2016 - 2020,
FORDs: 1.4 Chemical sciences)

Univerzita Palackého v Olomouci: n = 498
ČR: n = 3932
EU15: n = 92493



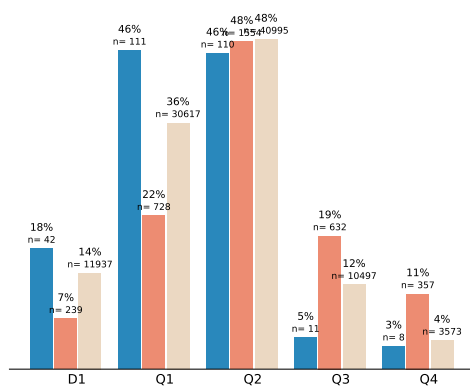
Univerzita Palackého v Olomouci;
WoS Category CHEMISTRY, ORGANIC (2016 - 2020,
FORDs: 1.4 Chemical sciences)

Univerzita Palackého v Olomouci: n = 106
ČR: n = 718
EU15: n = 19643



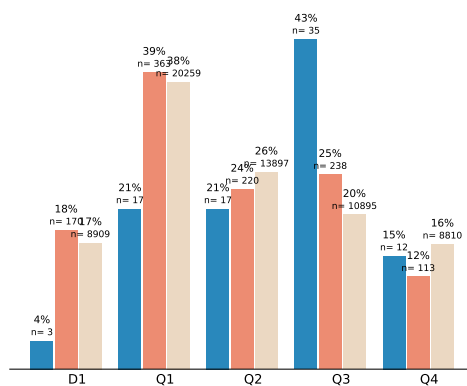
Univerzita Palackého v Olomouci;
WoS Category CHEMISTRY, PHYSICAL (2016 - 2020,
FORDs: 1.4 Chemical sciences)

Univerzita Palackého v Olomouci: n = 240
ČR: n = 3271
EU15: n = 85682



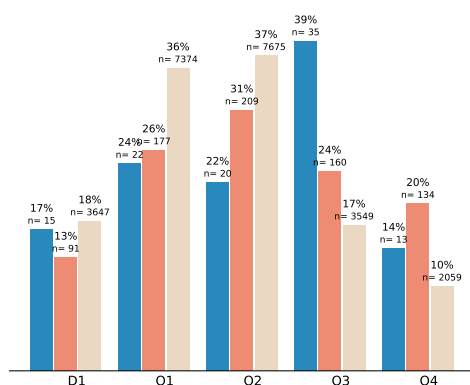
Univerzita Palackého v Olomouci;
WoS Category CLINICAL NEUROLOGY (2016 - 2020,
FORDs: 3.2 Clinical medicine)

Univerzita Palackého v Olomouci: n = 81
ČR: n = 934
EU15: n = 53861



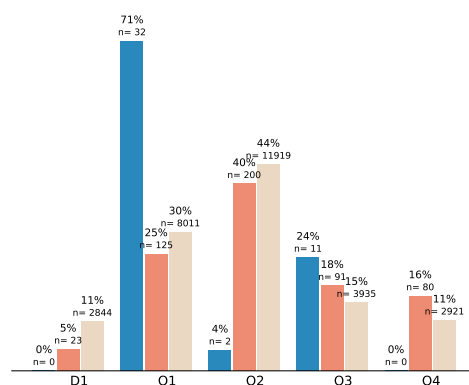
Univerzita Palackého v Olomouci;
WoS Category COMPUTER SCIENCE, ARTIFICIAL INTELLIGENCE (2016 - 2020,
FORDs: 1.2 Computer and information sciences)

Univerzita Palackého v Olomouci: n = 90
ČR: n = 680
EU15: n = 20657



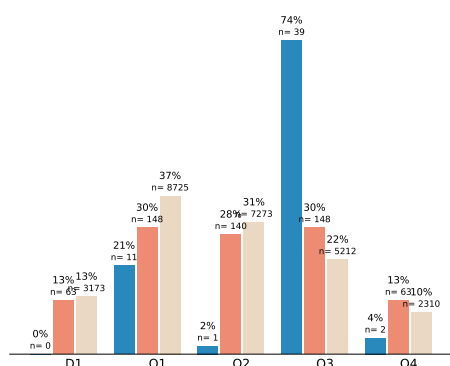
Univerzita Palackého v Olomouci;
WoS Category COMPUTER SCIENCE, INFORMATION SYSTEMS (2016 - 2020,
FORDs: 1.2 Computer and information sciences)

Univerzita Palackého v Olomouci: n = 45
ČR: n = 496
EU15: n = 26786



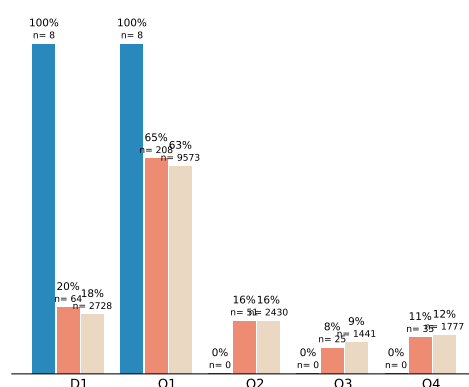
Univerzita Palackého v Olomouci;
WoS Category COMPUTER SCIENCE, INTERDISCIPLINARY APPLICATIONS (2016 - 2020,
FORDs: 1.2 Computer and information sciences)

Univerzita Palackého v Olomouci: n = 53
ČR: n = 499
EU15: n = 23520



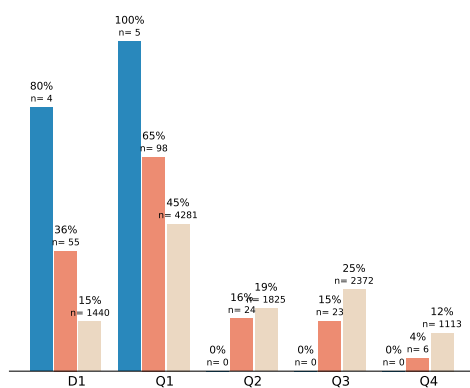
Univerzita Palackého v Olomouci;
WoS Category CONSTRUCTION & BUILDING TECHNOLOGY (2016 - 2020,
FORDs: 2.1 Civil engineering)

Univerzita Palackého v Olomouci: n = 8
ČR: n = 319
EU15: n = 15221



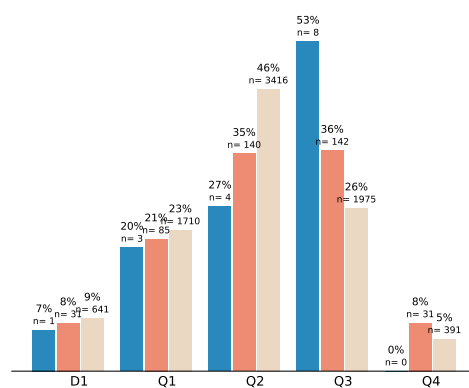
Univerzita Palackého v Olomouci;
WoS Category CRITICAL CARE MEDICINE (2016 - 2020,
FORDs: 3.2 Clinical medicine)

Univerzita Palackého v Olomouci: n = 5
ČR: n = 151
EU15: n = 9591



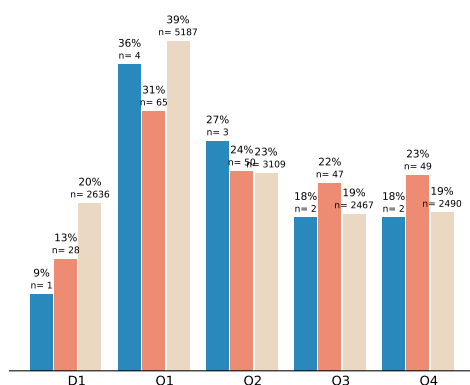
Univerzita Palackého v Olomouci;
WoS Category CRYSTALLOGRAPHY (2016 - 2020,
FORDs: 1.4 Chemical sciences)

Univerzita Palackého v Olomouci: n = 15
ČR: n = 398
EU15: n = 7492



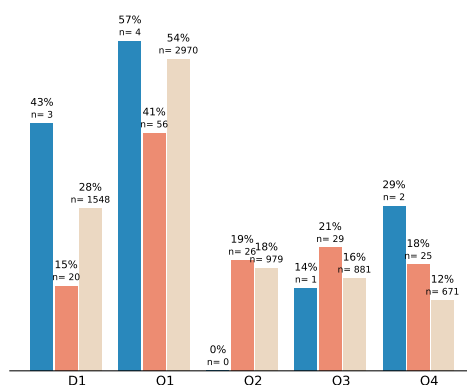
Univerzita Palackého v Olomouci;
WoS Category DERMATOLOGY (2016 - 2020,
FORDs: 3.2 Clinical medicine)

Univerzita Palackého v Olomouci: n = 11
ČR: n = 211
EU15: n = 13253



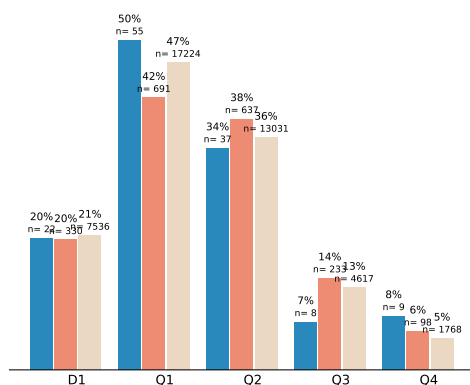
Univerzita Palackého v Olomouci;
WoS Category DEVELOPMENTAL BIOLOGY (2016 - 2020,
FORDs: 1.6 Biological sciences)

Univerzita Palackého v Olomouci: n = 7
ČR: n = 136
EU15: n = 5501



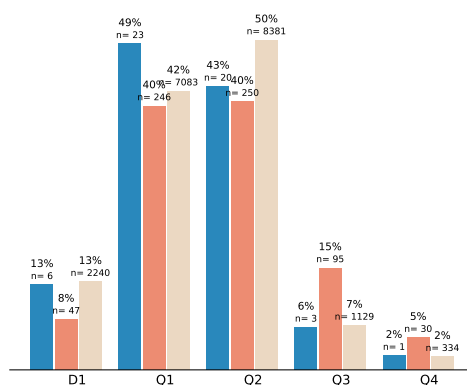
Univerzita Palackého v Olomouci;
WoS Category ECOLOGY (2016 - 2020,
FORDs: 1.6 Biological sciences)

Univerzita Palackého v Olomouci: n = 109
ČR: n = 1659
EU15: n = 36640



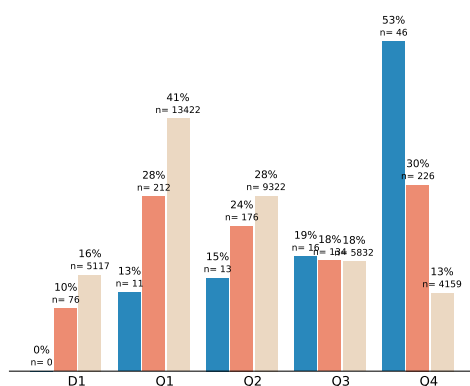
Univerzita Palackého v Olomouci;
WoS Category ELECTROCHEMISTRY (2016 - 2020,
FORDs: 1.4 Chemical sciences)

Univerzita Palackého v Olomouci: n = 47
ČR: n = 621
EU15: n = 16927



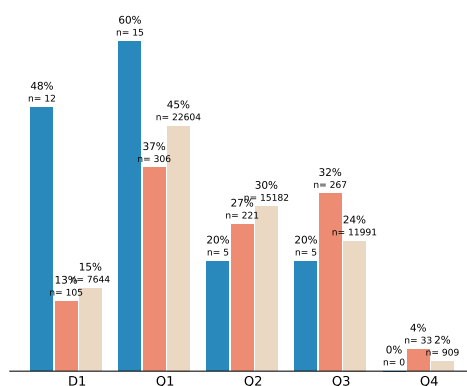
Univerzita Palackého v Olomouci;
WoS Category ENDOCRINOLOGY & METABOLISM (2016 - 2020,
FORDs: 3.2 Clinical medicine)

Univerzita Palackého v Olomouci: n = 86
ČR: n = 748
EU15: n = 32789

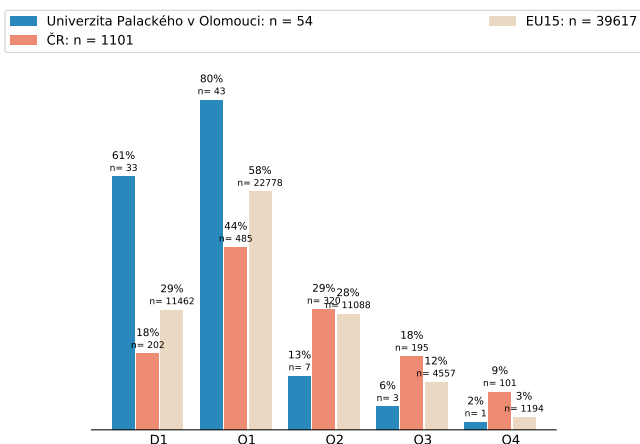


Univerzita Palackého v Olomouci;
WoS Category ENERGY & FUELS (2016 - 2020,
FORDs: 2.7 Environmental engineering)

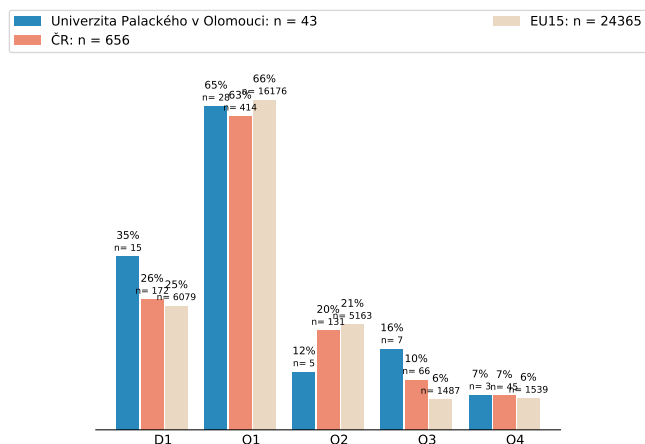
Univerzita Palackého v Olomouci: n = 25
ČR: n = 827
EU15: n = 50686



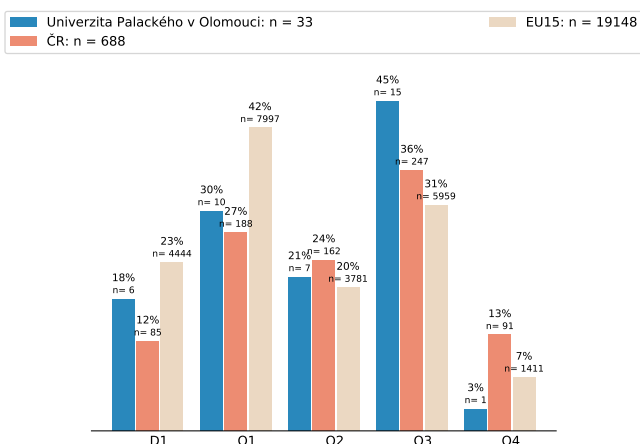
Univerzita Palackého v Olomouci;
WoS Category ENGINEERING, CHEMICAL (2016 - 2020,
FORDs: 2.4 Chemical engineering)



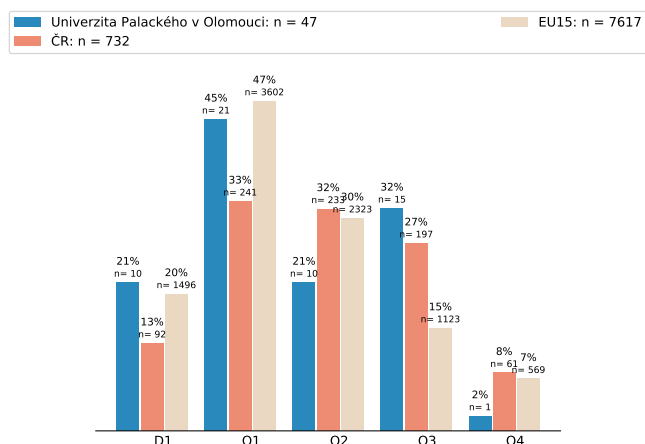
Univerzita Palackého v Olomouci;
WoS Category ENGINEERING, ENVIRONMENTAL (2016 - 2020,
FORDs: 2.7 Environmental engineering)



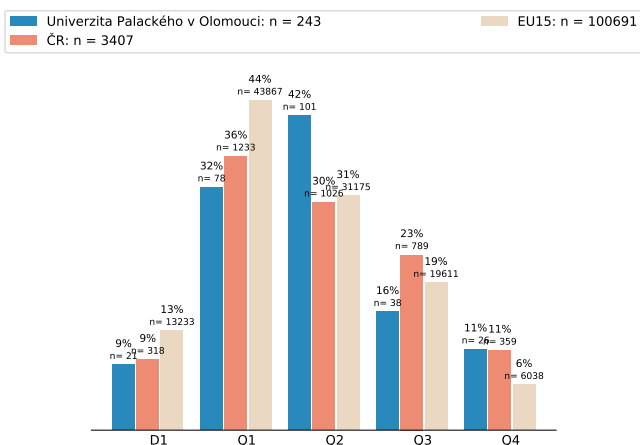
Univerzita Palackého v Olomouci;
WoS Category ENGINEERING, MULTIDISCIPLINARY (2016 - 2020,
FORDs: 2.11 Other engineering and technologies)



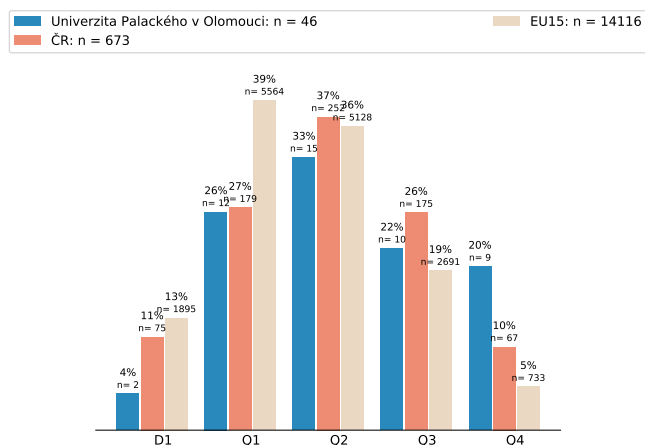
Univerzita Palackého v Olomouci;
WoS Category ENTOMOLOGY (2016 - 2020,
FORDs: 1.6 Biological sciences)



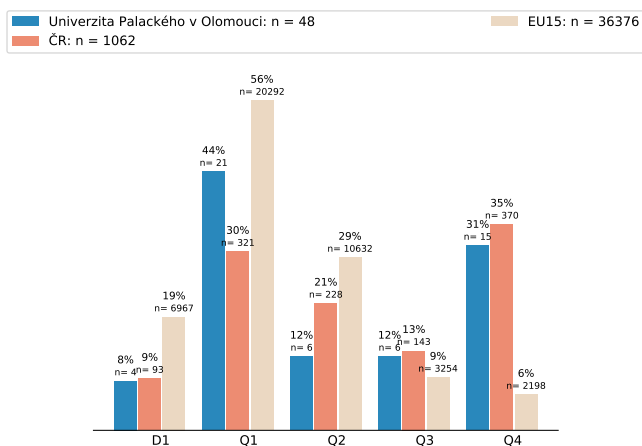
Univerzita Palackého v Olomouci;
WoS Category ENVIRONMENTAL SCIENCES (2016 - 2020,
FORDs: 1.5 Earth and related environmental sciences)



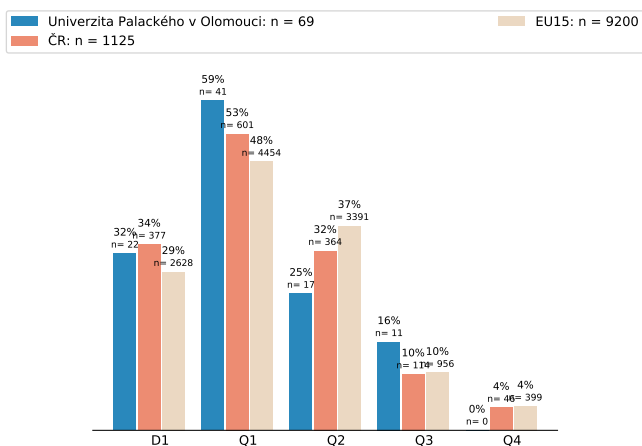
Univerzita Palackého v Olomouci;
WoS Category EVOLUTIONARY BIOLOGY (2016 - 2020,
FORDs: 1.6 Biological sciences)



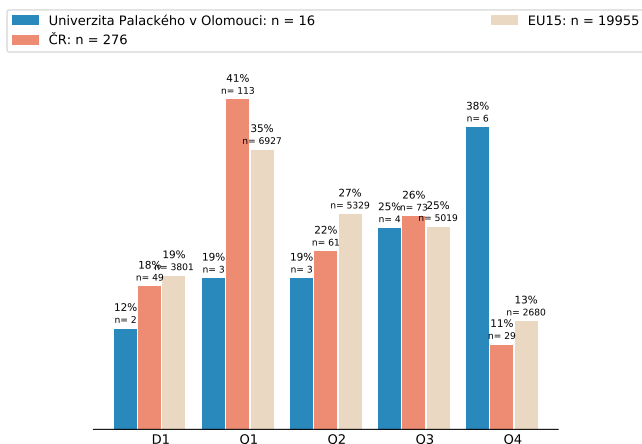
Univerzita Palackého v Olomouci;
WoS Category FOOD SCIENCE & TECHNOLOGY (2016 - 2020,
FORDs: 2.11 Other engineering and technologies;
4.5 Other agricultural sciences)



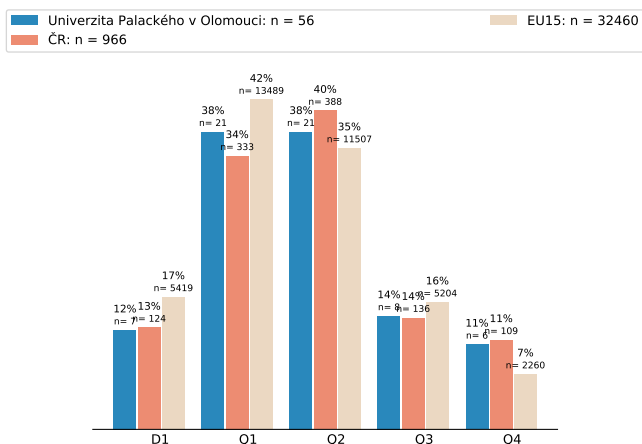
Univerzita Palackého v Olomouci;
WoS Category FORESTRY (2016 - 2020,
FORDs: 4.1 Agriculture, forestry, and fisheries)



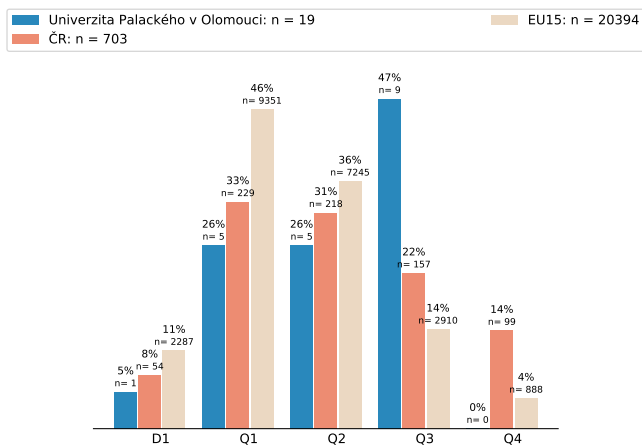
Univerzita Palackého v Olomouci;
WoS Category GASTROENTEROLOGY & HEPATOLOGY (2016 - 2020,
FORDs: 3.2 Clinical medicine)



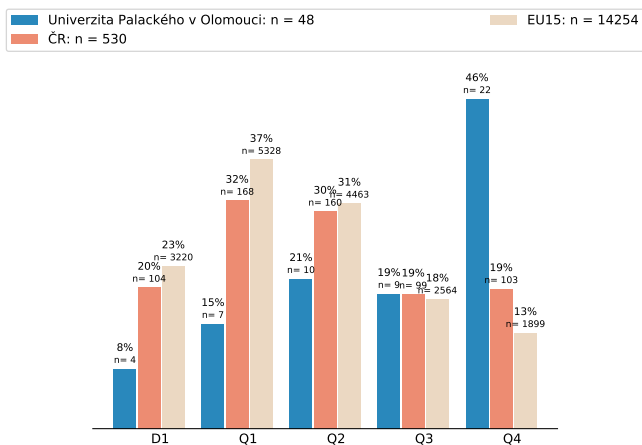
Univerzita Palackého v Olomouci;
WoS Category GENETICS & HEREDITY (2016 - 2020,
FORDs: 1.6 Biological sciences)



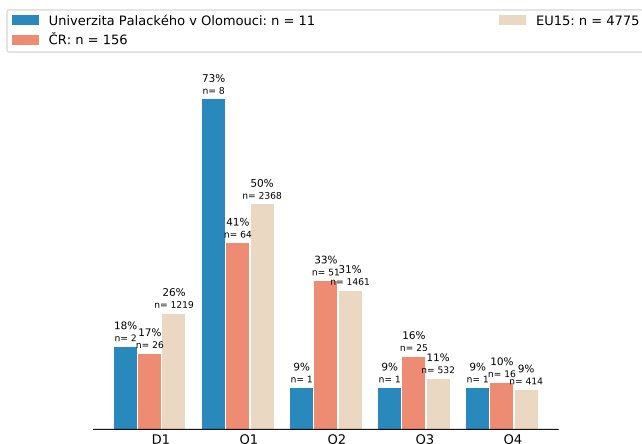
Univerzita Palackého v Olomouci;
WoS Category GEOCHEMISTRY & GEOPHYSICS (2016 - 2020,
FORDs: 1.5 Earth and related environmental sciences)



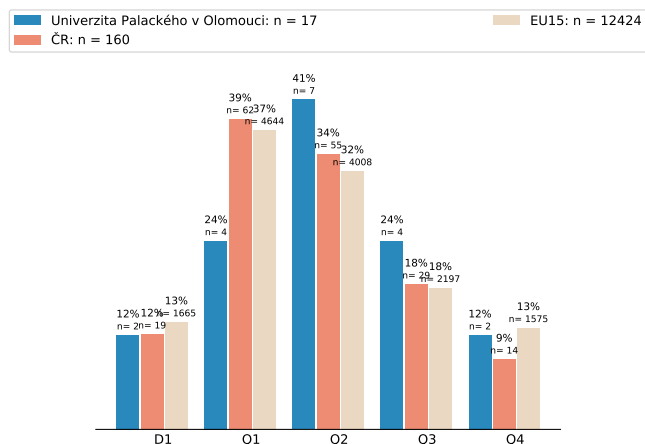
Univerzita Palackého v Olomouci;
WoS Category GEOGRAPHY, PHYSICAL (2016 - 2020,
FORDs: 1.5 Earth and related environmental sciences)



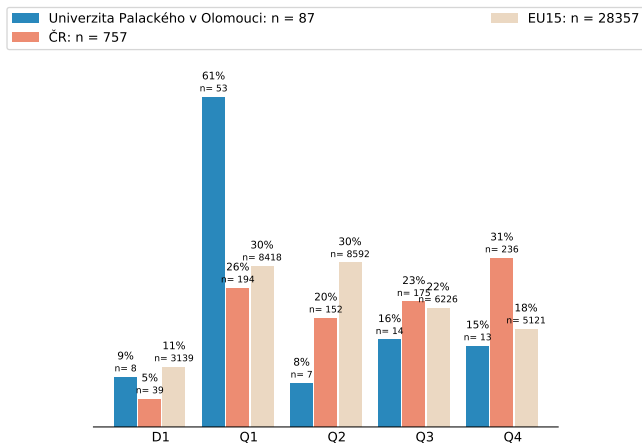
Univerzita Palackého v Olomouci;
WoS Category GEOLOGY (2016 - 2020,
FORDs: 1.5 Earth and related environmental sciences)



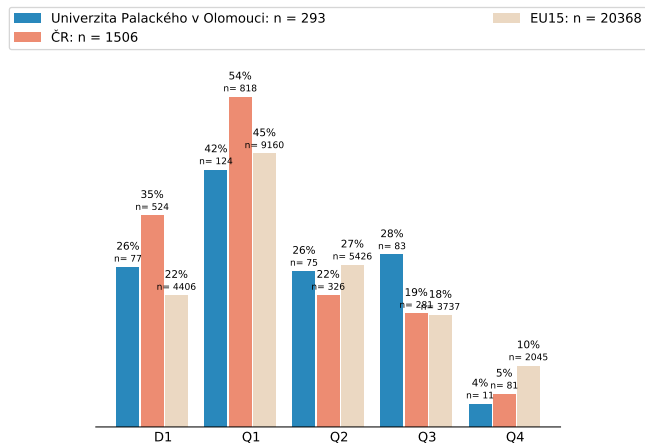
Univerzita Palackého v Olomouci;
WoS Category GERIATRICS & GERONTOLOGY (2016 - 2020,
FORDs: 3.2 Clinical medicine)



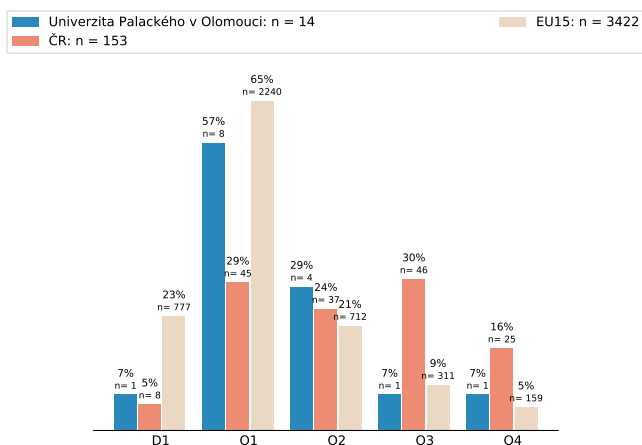
Univerzita Palackého v Olomouci;
WoS Category GREEN & SUSTAINABLE SCIENCE & TECHNOLOGY (2016 - 2020,
FORDs: 2.7 Environmental engineering;
1.4 Chemical sciences;
1.5 Earth and related environmental sciences)



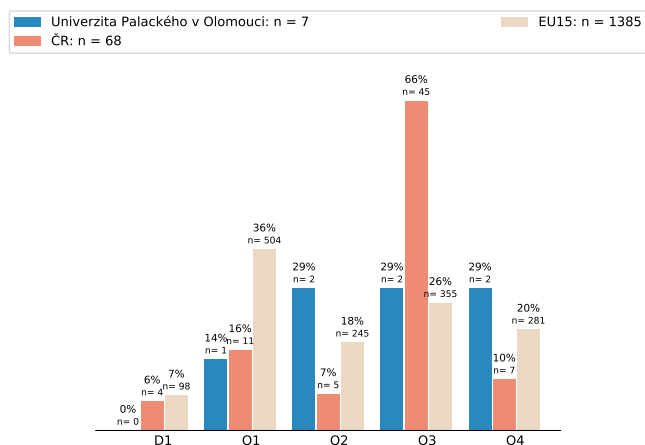
Univerzita Palackého v Olomouci;
WoS Category HEMATOLOGY (2016 - 2020,
FORDs: 3.2 Clinical medicine)



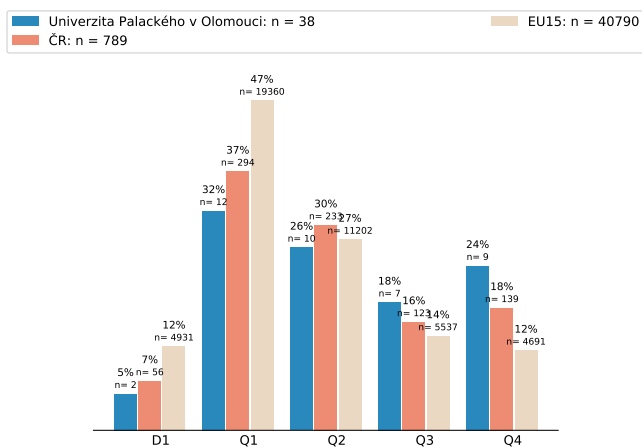
Univerzita Palackého v Olomouci;
WoS Category HORTICULTURE (2016 - 2020,
FORDs: 4.1 Agriculture, forestry, and fisheries)



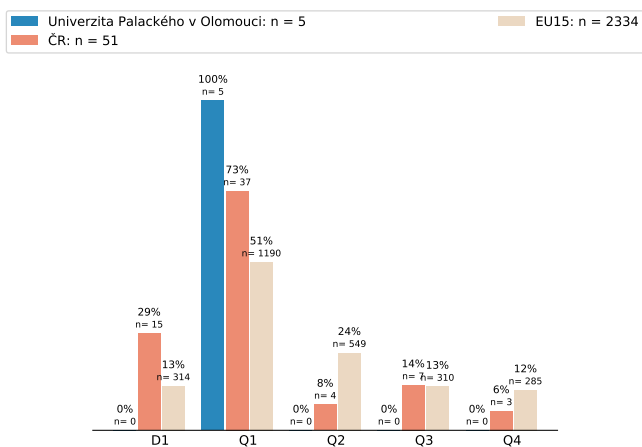
Univerzita Palackého v Olomouci;
WoS Category HUMANITIES, MULTIDISCIPLINARY (2016 - 2020,
FORDs: 6.5 Other Humanities and the Arts)



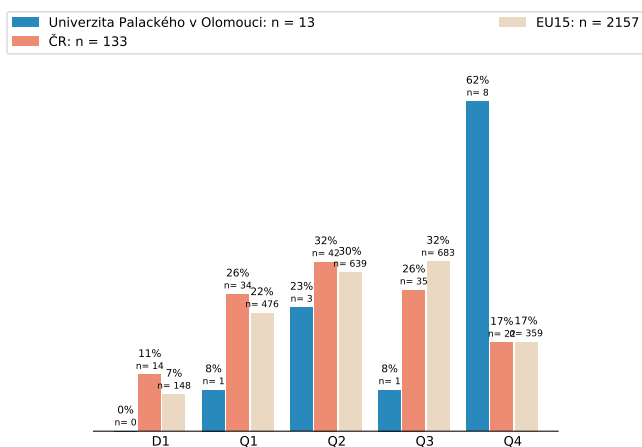
Univerzita Palackého v Olomouci;
WoS Category IMMUNOLOGY (2016 - 2020,
FORDs: 3.1 Basic medical research)



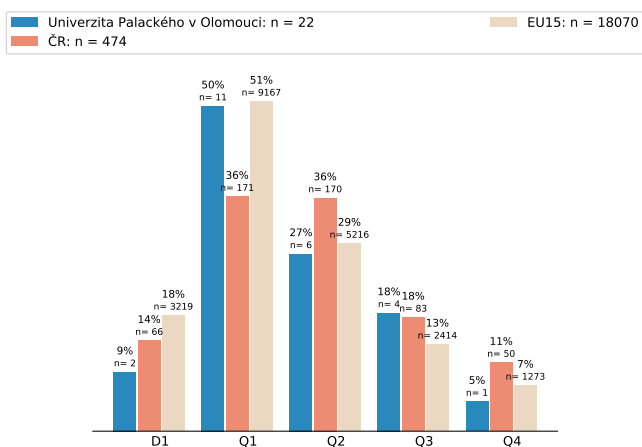
Univerzita Palackého v Olomouci;
WoS Category INTEGRATIVE & COMPLEMENTARY MEDICINE (2016 - 2020,
FORDs: 3.2 Clinical medicine)



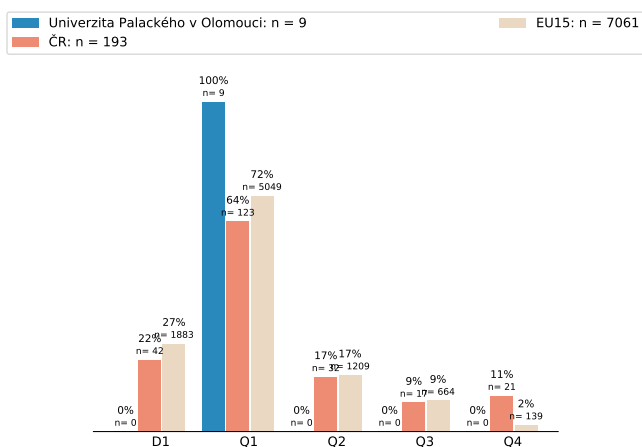
Univerzita Palackého v Olomouci;
WoS Category LOGIC (2016 - 2020,
FORDs: 1.1 Mathematics;
1.2 Computer and information sciences)



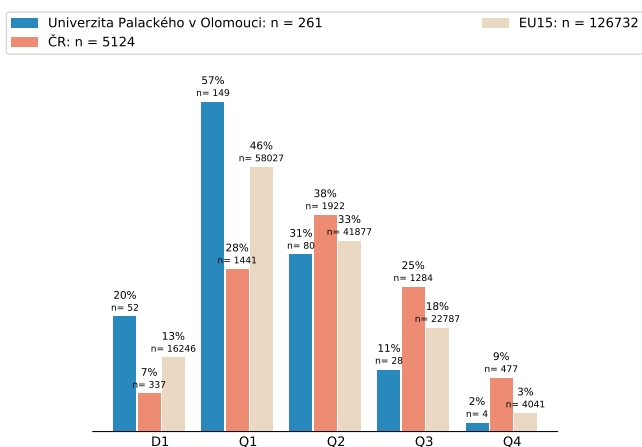
Univerzita Palackého v Olomouci;
WoS Category MARINE & FRESHWATER BIOLOGY (2016 - 2020,
FORDs: 1.6 Biological sciences)



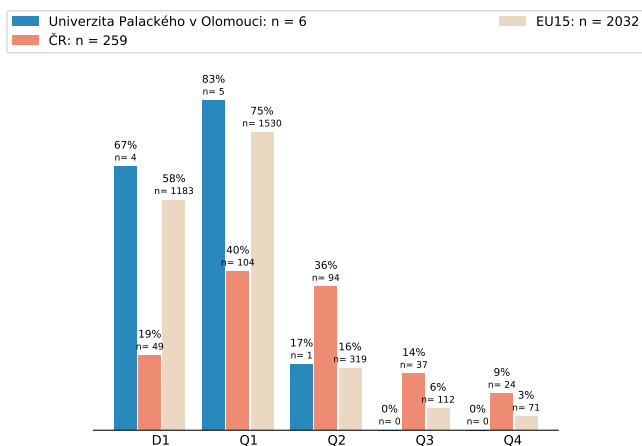
Univerzita Palackého v Olomouci;
WoS Category MATERIALS SCIENCE, COMPOSITES (2016 - 2020,
FORDs: 2.5 Materials engineering)



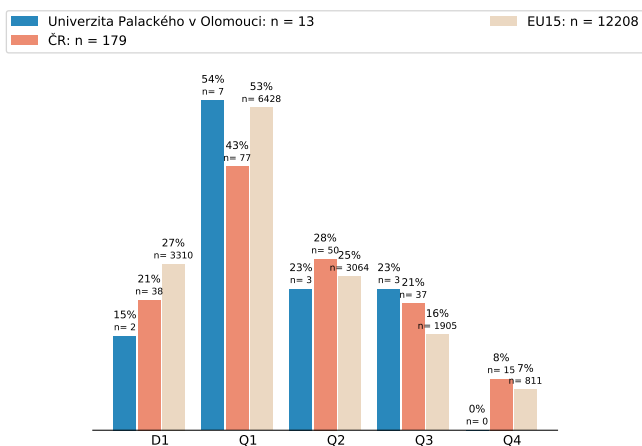
Univerzita Palackého v Olomouci;
WoS Category MATERIALS SCIENCE, MULTIDISCIPLINARY (2016 - 2020,
FORDs: 2.5 Materials engineering)



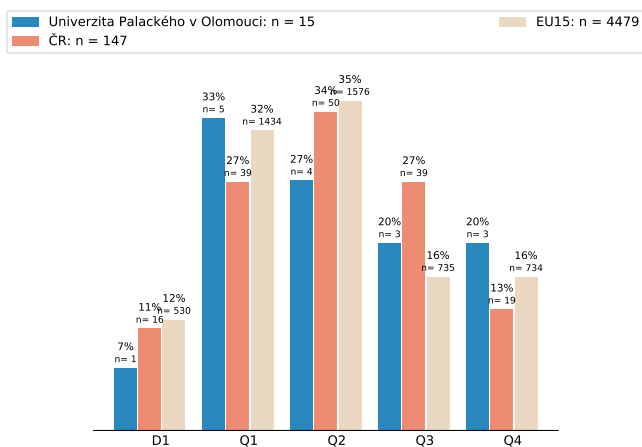
Univerzita Palackého v Olomouci;
WoS Category MATERIALS SCIENCE, TEXTILES (2016 - 2020,
FORDs: 2.5 Materials engineering)



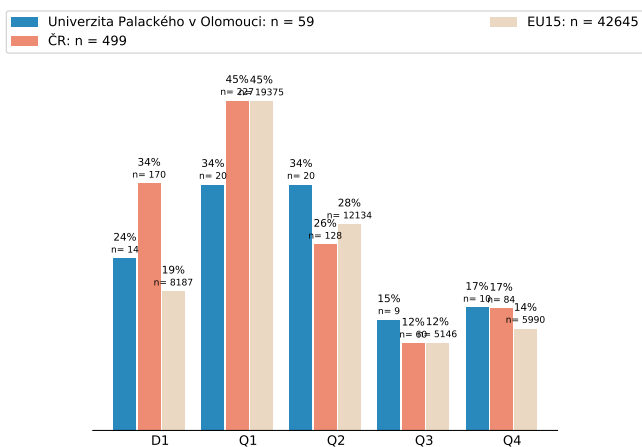
Univerzita Palackého v Olomouci;
WoS Category MATHEMATICAL & COMPUTATIONAL BIOLOGY (2016 - 2020,
FORDs: 1.6 Biological sciences)



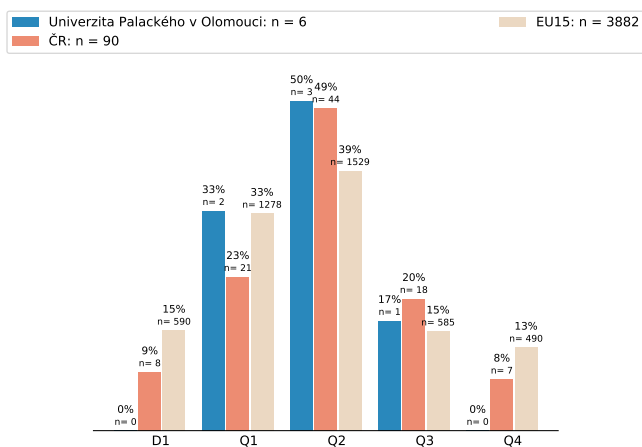
Univerzita Palackého v Olomouci;
WoS Category MEDICAL LABORATORY TECHNOLOGY (2016 - 2020,
FORDs: 2.6 Medical engineering)



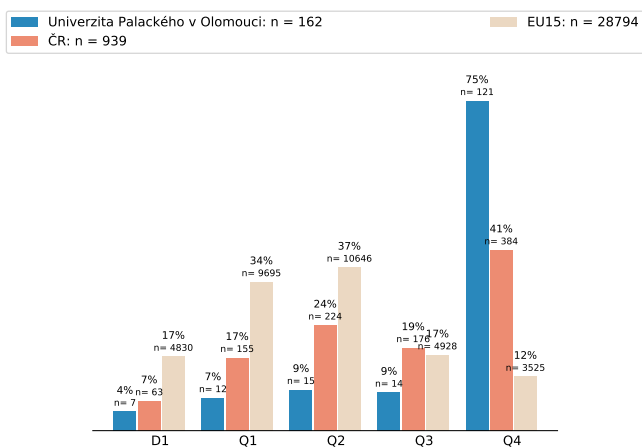
Univerzita Palackého v Olomouci;
WoS Category MEDICINE, GENERAL & INTERNAL (2016 - 2020,
FORDs: 3.2 Clinical medicine)



Univerzita Palackého v Olomouci;
WoS Category MEDICINE, LEGAL (2016 - 2020,
FORDs: 3.3 Health sciences)

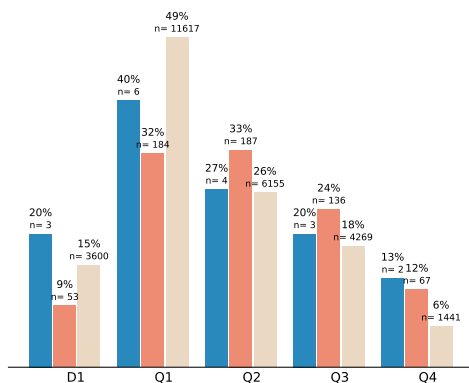


Univerzita Palackého v Olomouci;
WoS Category MEDICINE, RESEARCH & EXPERIMENTAL (2016 - 2020,
FORDs: 3.1 Basic medical research)



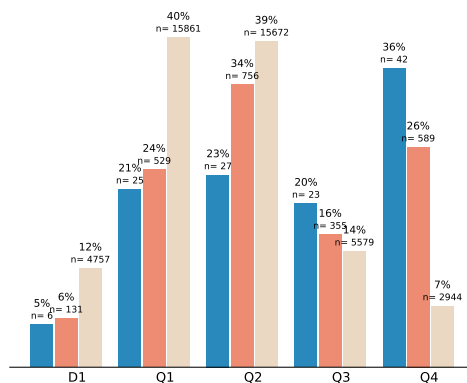
Univerzita Palackého v Olomouci;
WoS Category METEOROLOGY & ATMOSPHERIC SCIENCES (2016 - 2020,
FORDs: 1.5 Earth and related environmental sciences)

Univerzita Palackého v Olomouci: n = 15
EU15: n = 23482
ČR: n = 574



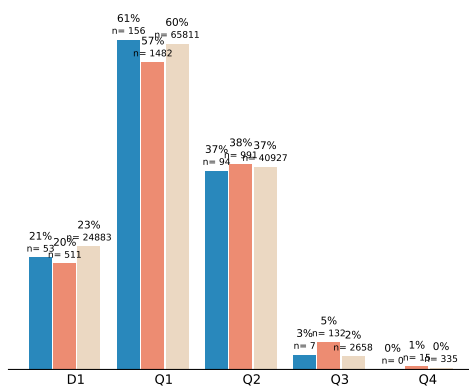
Univerzita Palackého v Olomouci;
WoS Category MICROBIOLOGY (2016 - 2020,
FORDs: 1.6 Biological sciences)

Univerzita Palackého v Olomouci: n = 117
EU15: n = 40056
ČR: n = 2229



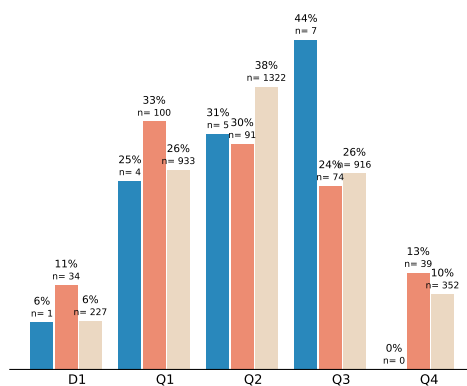
Univerzita Palackého v Olomouci;
WoS Category MULTIDISCIPLINARY SCIENCES (2016 - 2020,
FORDs: 1.7 Other natural sciences)

Univerzita Palackého v Olomouci: n = 257
EU15: n = 109731
ČR: n = 2620



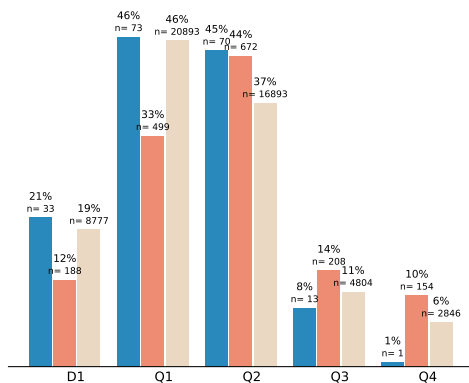
Univerzita Palackého v Olomouci;
WoS Category MYCOLOGY (2016 - 2020,
FORDs: 1.6 Biological sciences)

Univerzita Palackého v Olomouci: n = 16
EU15: n = 3523
ČR: n = 304



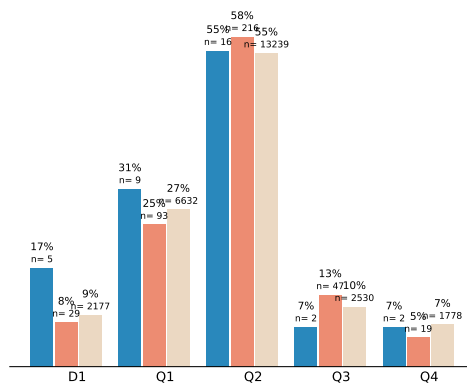
Univerzita Palackého v Olomouci;
WoS Category NANOSCIENCE & NANOTECHNOLOGY (2016 - 2020,
FORDs: 2.10 Nano-technology)

Univerzita Palackého v Olomouci: n = 157
EU15: n = 45436
ČR: n = 1533

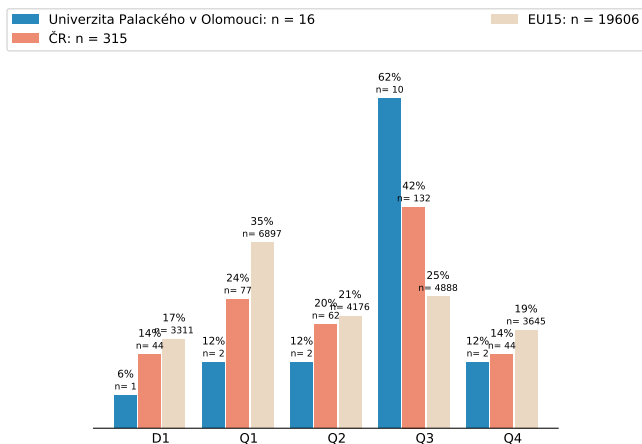


Univerzita Palackého v Olomouci;
WoS Category NUTRITION & DIETETICS (2016 - 2020,
FORDs: 3.3 Health sciences)

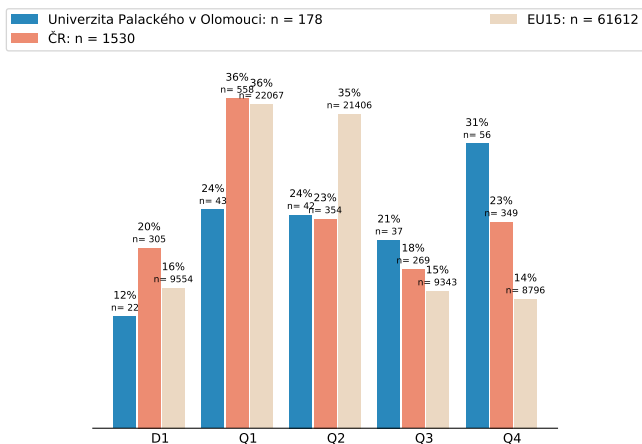
Univerzita Palackého v Olomouci: n = 29
EU15: n = 24179
ČR: n = 375



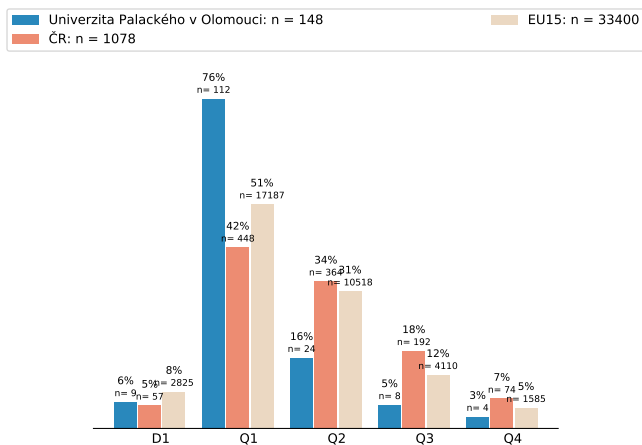
Univerzita Palackého v Olomouci;
WoS Category OBSTETRICS & GYNECOLOGY (2016 - 2020,
FORDs: 3.2 Clinical medicine)



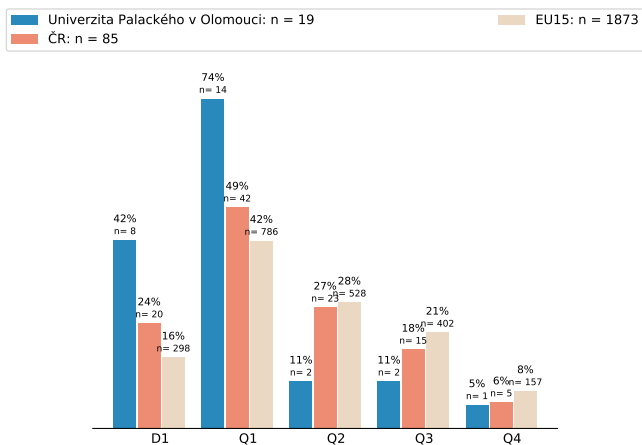
Univerzita Palackého v Olomouci;
WoS Category ONCOLOGY (2016 - 2020,
FORDs: 3.2 Clinical medicine)



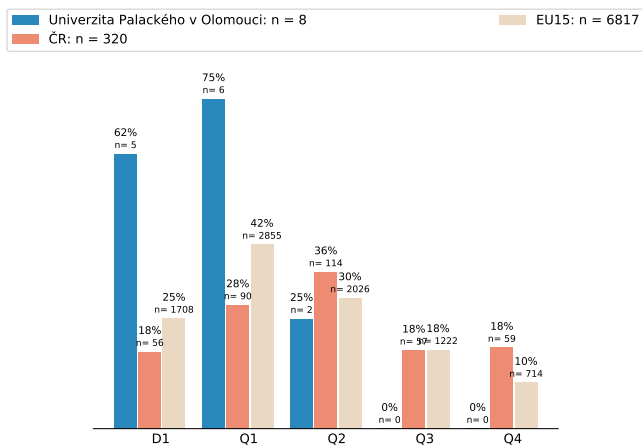
Univerzita Palackého v Olomouci;
WoS Category OPTICS (2016 - 2020,
FORDs: 1.3 Physical sciences)



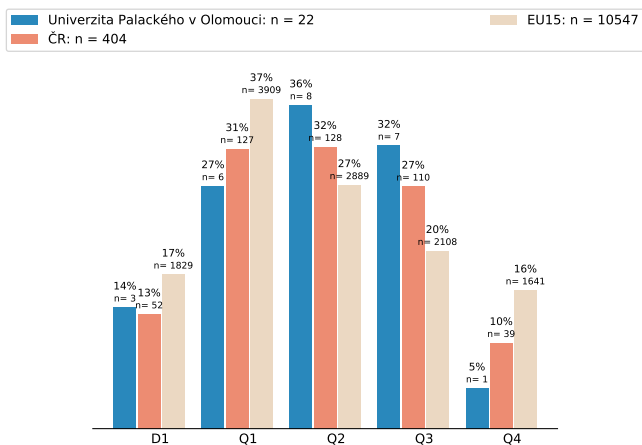
Univerzita Palackého v Olomouci;
WoS Category ORNITHOLOGY (2016 - 2020,
FORDs: 1.6 Biological sciences)



Univerzita Palackého v Olomouci;
WoS Category PALEONTOLOGY (2016 - 2020,
FORDs: 1.5 Earth and related environmental sciences)

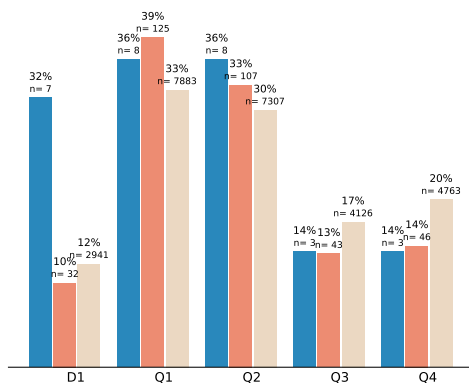


Univerzita Palackého v Olomouci;
WoS Category PATHOLOGY (2016 - 2020,
FORDs: 3.1 Basic medical research)



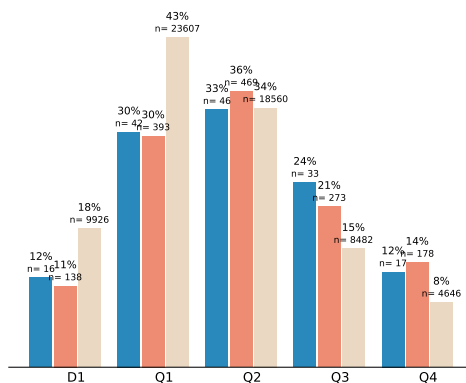
Univerzita Palackého v Olomouci;
WoS Category PEDIATRICS (2016 - 2020,
FORDs: 3.2 Clinical medicine)

Univerzita Palackého v Olomouci: n = 22
ČR: n = 321
EU15: n = 24079



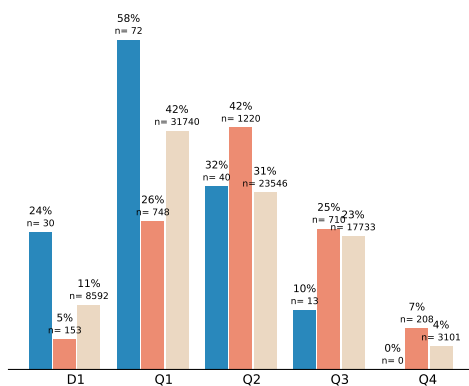
Univerzita Palackého v Olomouci;
WoS Category PHARMACOLOGY & PHARMACY (2016 - 2020,
FORDs: 3.1 Basic medical research)

Univerzita Palackého v Olomouci: n = 138
ČR: n = 1313
EU15: n = 55295



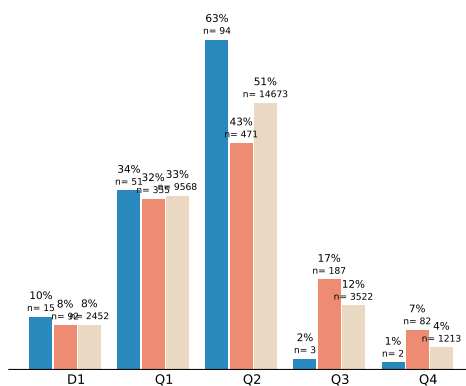
Univerzita Palackého v Olomouci;
WoS Category PHYSICS, APPLIED (2016 - 2020,
FORDs: 1.3 Physical sciences)

Univerzita Palackého v Olomouci: n = 125
ČR: n = 2886
EU15: n = 76120



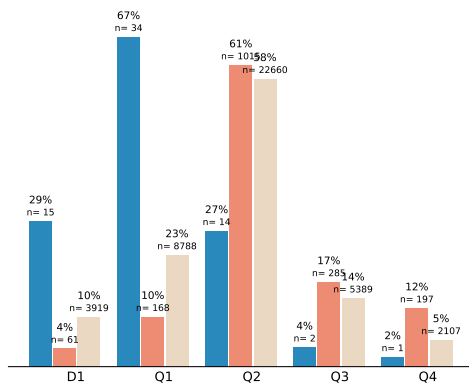
Univerzita Palackého v Olomouci;
WoS Category PHYSICS, ATOMIC, MOLECULAR & CHEMICAL (2016 - 2020,
FORDs: 1.3 Physical sciences)

Univerzita Palackého v Olomouci: n = 150
ČR: n = 1095
EU15: n = 28976



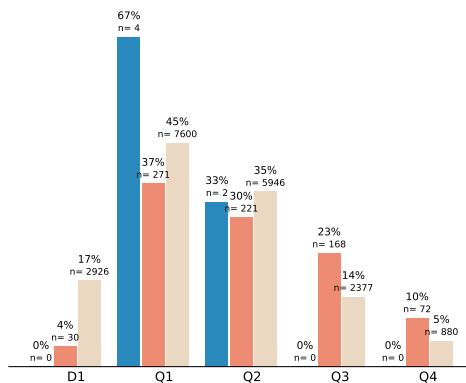
Univerzita Palackého v Olomouci;
WoS Category PHYSICS, CONDENSED MATTER (2016 - 2020,
FORDs: 1.3 Physical sciences)

Univerzita Palackého v Olomouci: n = 51
ČR: n = 1665
EU15: n = 38944

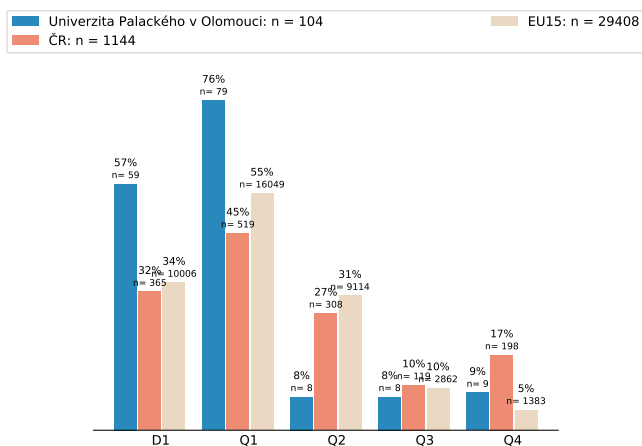


Univerzita Palackého v Olomouci;
WoS Category PHYSICS, FLUIDS & PLASMAS (2016 - 2020,
FORDs: 1.3 Physical sciences)

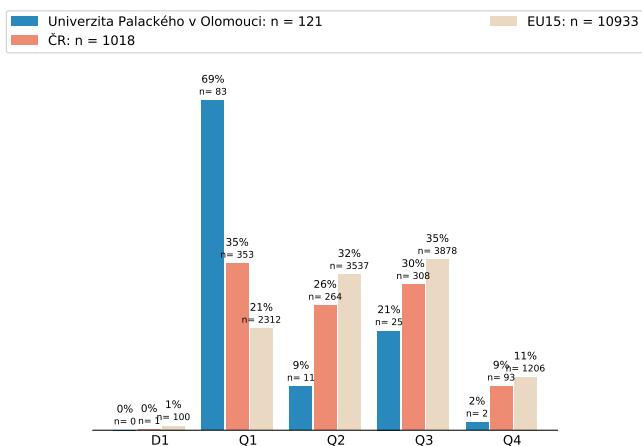
Univerzita Palackého v Olomouci: n = 6
ČR: n = 732
EU15: n = 16803



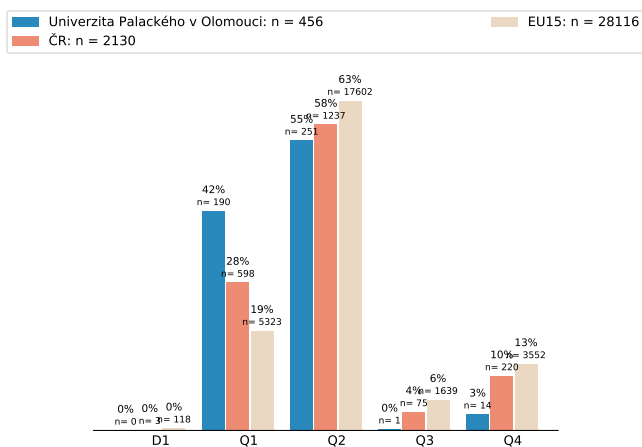
Univerzita Palackého v Olomouci;
WoS Category PHYSICS, MULTIDISCIPLINARY (2016 - 2020,
FORDs: 1.3 Physical sciences)



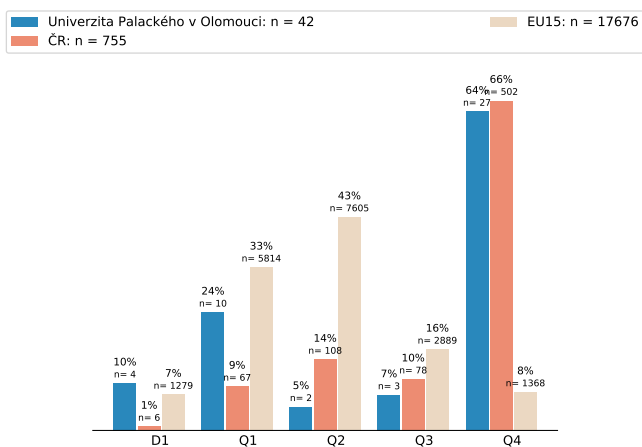
Univerzita Palackého v Olomouci;
WoS Category PHYSICS, NUCLEAR (2016 - 2020,
FORDs: 1.3 Physical sciences)



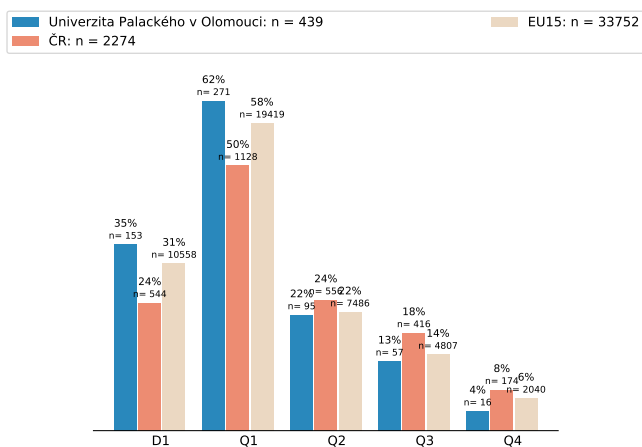
Univerzita Palackého v Olomouci;
WoS Category PHYSICS, PARTICLES & FIELDS (2016 - 2020,
FORDs: 1.3 Physical sciences)



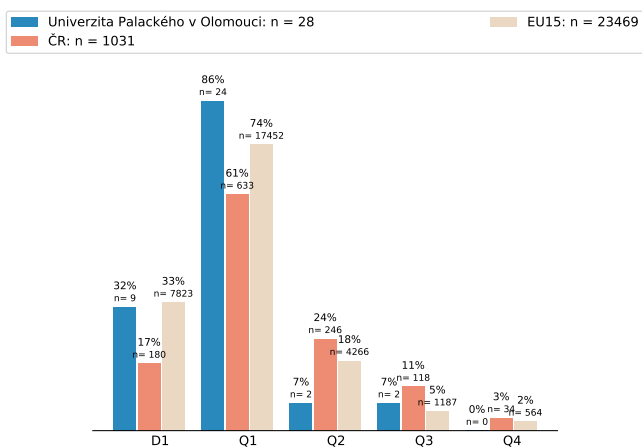
Univerzita Palackého v Olomouci;
WoS Category PHYSIOLOGY (2016 - 2020,
FORDs: 3.1 Basic medical research)



Univerzita Palackého v Olomouci;
WoS Category PLANT SCIENCES (2016 - 2020,
FORDs: 1.6 Biological sciences)

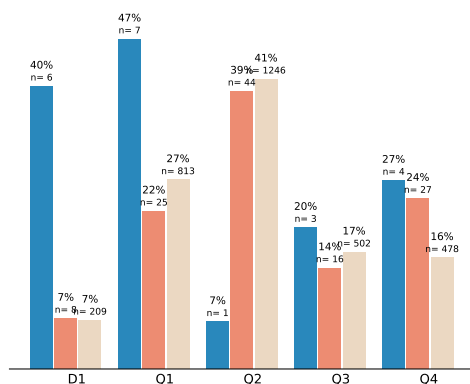


Univerzita Palackého v Olomouci;
WoS Category POLYMER SCIENCE (2016 - 2020,
FORDs: 1.4 Chemical sciences)



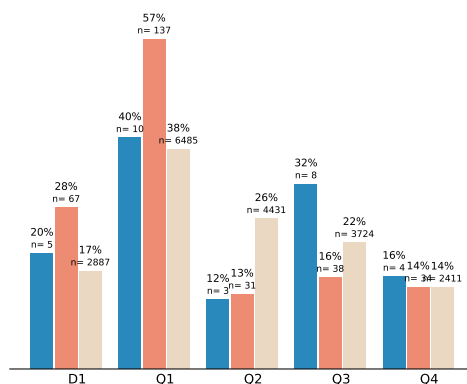
Univerzita Palackého v Olomouci;
WoS Category QUANTUM SCIENCE & TECHNOLOGY (2016 - 2020,
FORDs: 1.3 Physical sciences;
2.11 Other engineering and technologies;
1.4 Chemical sciences;
2.2 Electrical engineering, electronic engineering, information engineering)

Univerzita Palackého v Olomouci: n = 15
ČR: n = 112
EU15: n = 3039



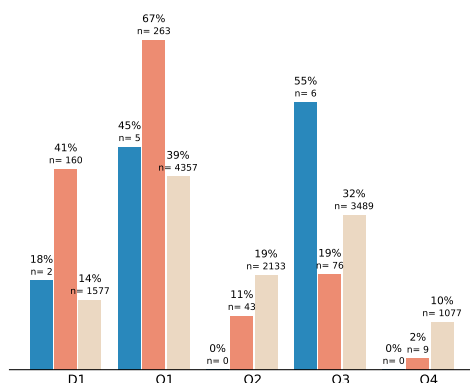
Univerzita Palackého v Olomouci;
WoS Category RESPIRATORY SYSTEM (2016 - 2020,
FORDs: 3.2 Clinical medicine)

Univerzita Palackého v Olomouci: n = 25
ČR: n = 240
EU15: n = 17051



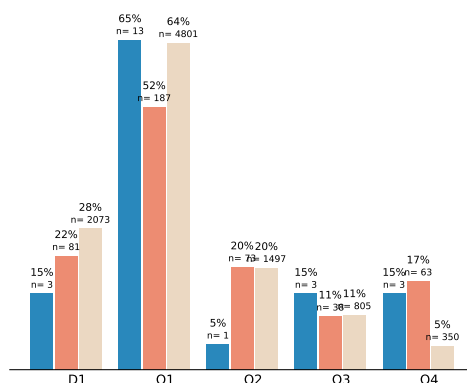
Univerzita Palackého v Olomouci;
WoS Category RHEUMATOLOGY (2016 - 2020,
FORDs: 3.2 Clinical medicine)

Univerzita Palackého v Olomouci: n = 11
ČR: n = 391
EU15: n = 11056



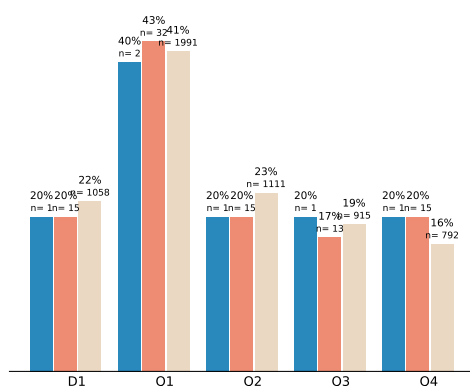
Univerzita Palackého v Olomouci;
WoS Category SOIL SCIENCE (2016 - 2020,
FORDs: 4.1 Agriculture, forestry, and fisheries)

Univerzita Palackého v Olomouci: n = 20
ČR: n = 361
EU15: n = 7453



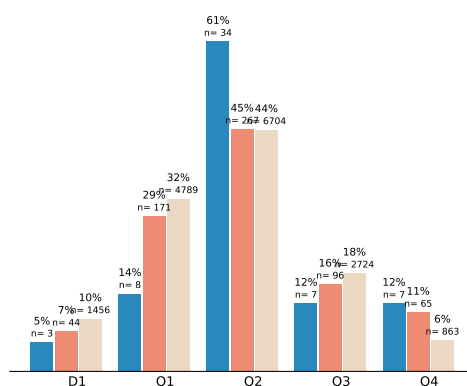
Univerzita Palackého v Olomouci;
WoS Category SUBSTANCE ABUSE (2016 - 2020,
FORDs: 3.3 Health sciences)

Univerzita Palackého v Olomouci: n = 5
ČR: n = 75
EU15: n = 4809



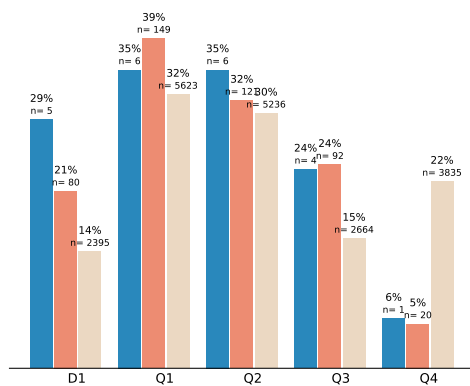
Univerzita Palackého v Olomouci;
WoS Category TOXICOLOGY (2016 - 2020,
FORDs: 3.1 Basic medical research)

Univerzita Palackého v Olomouci: n = 56
ČR: n = 599
EU15: n = 15080



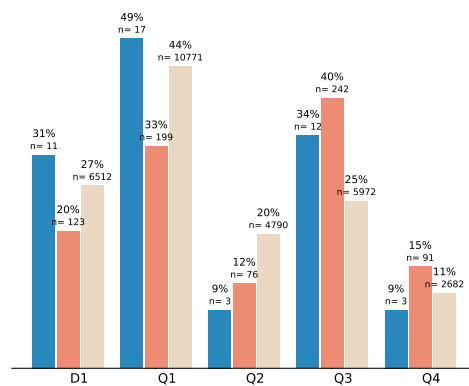
Univerzita Palackého v Olomouci;
WoS Category UROLOGY & NEPHROLOGY (2016 - 2020,
FORDs: 3.2 Clinical medicine)

Univerzita Palackého v Olomouci: n = 17
ČR: n = 382
EU15: n = 17358



Univerzita Palackého v Olomouci;
WoS Category WATER RESOURCES (2016 - 2020,
FORDs: 1.5 Earth and related environmental sciences)

Univerzita Palackého v Olomouci: n = 35
ČR: n = 608
EU15: n = 24215



Univerzita Palackého v Olomouci;
WoS Category ZOOLOGY (2016 - 2020,
FORDs: 1.6 Biological sciences)

Univerzita Palackého v Olomouci: n = 95
ČR: n = 1179
EU15: n = 17237

